

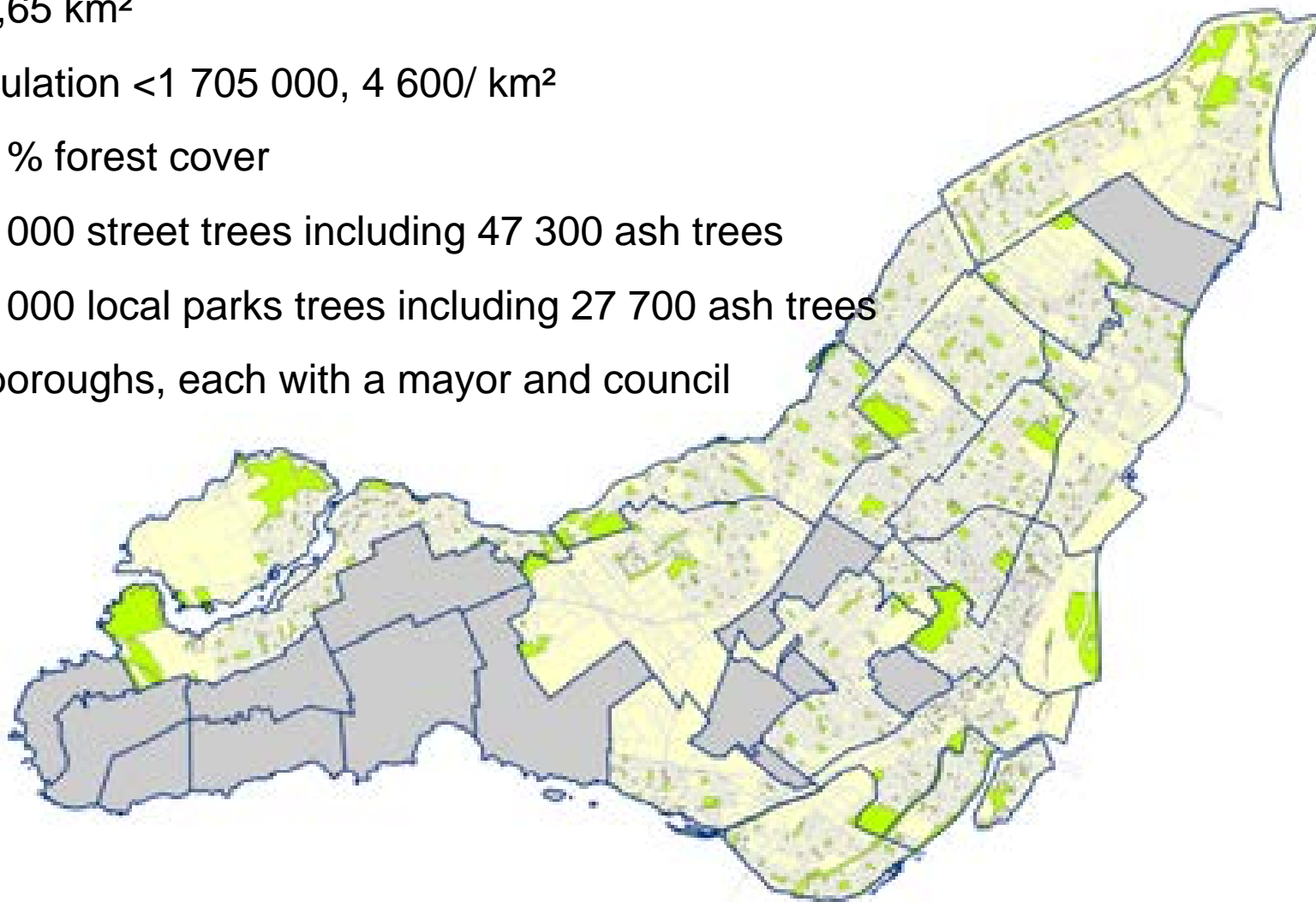
# Emerald ash borer: what to expect? Montreal's experience



November 7th 2017

# City of Montreal

- 365,65 km<sup>2</sup>
- Population <1 705 000, 4 600/ km<sup>2</sup>
- 19,1% forest cover
- 233 000 street trees including 47 300 ash trees
- 435 000 local parks trees including 27 700 ash trees
- 19 boroughs, each with a mayor and council



# City of Montreal EAB infestation detection

July 19th, 2011

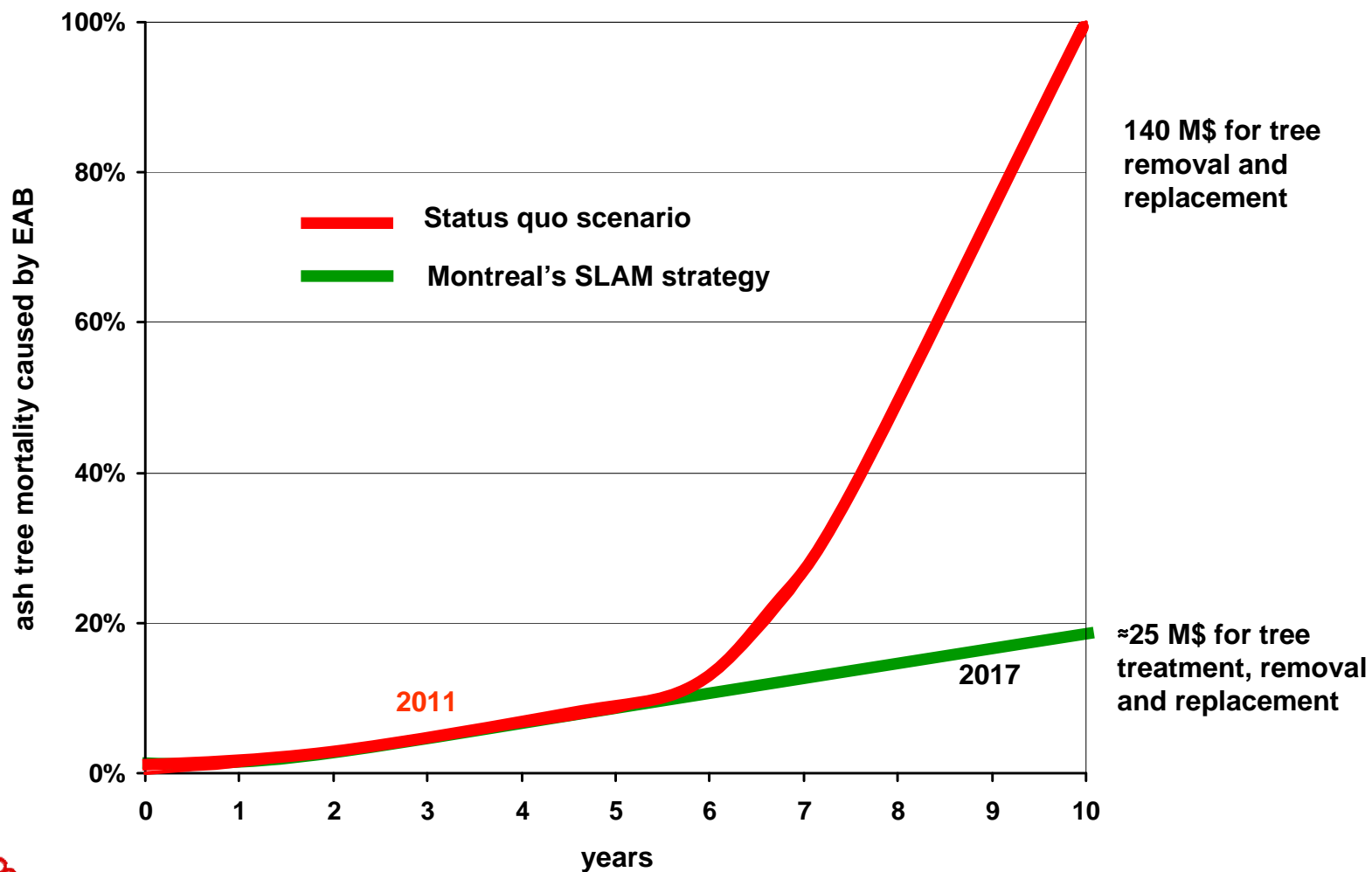


# City of Montreal EAB infestation detection



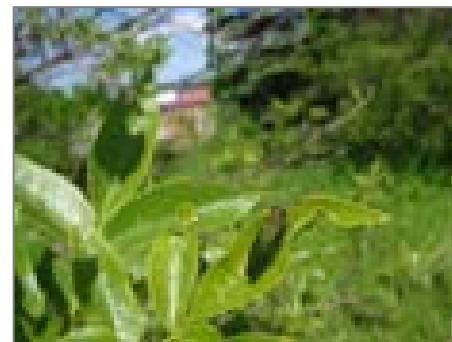
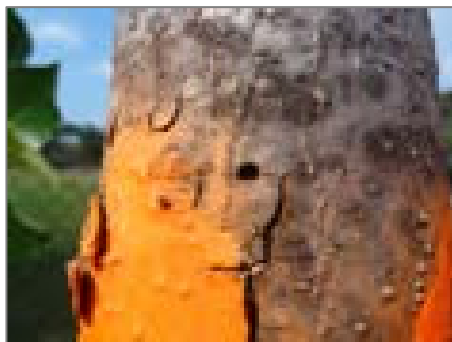
# City of Montreal Strategy

## Montreal street and local park ash tree mortality



# City of Montreal SLAM Strategy

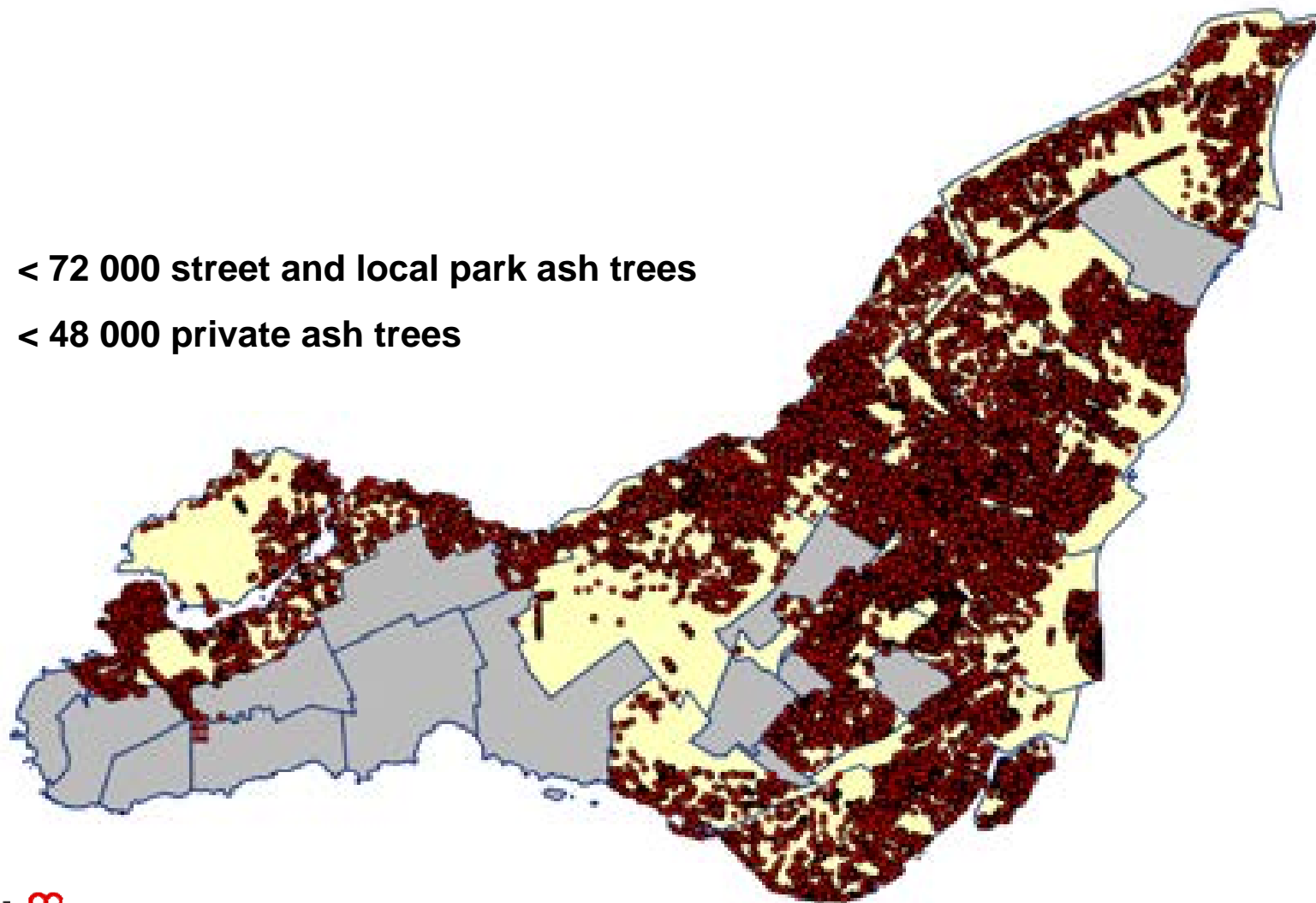
- Tree inventory
- EAB survey (branch sampling and traps)
- Injection of TreeAzin
- Strategic ash tree removal
- Ash wood movement control
- Bylaws and subsidy program
- Research partnerships
- Communication (local and regional approach)



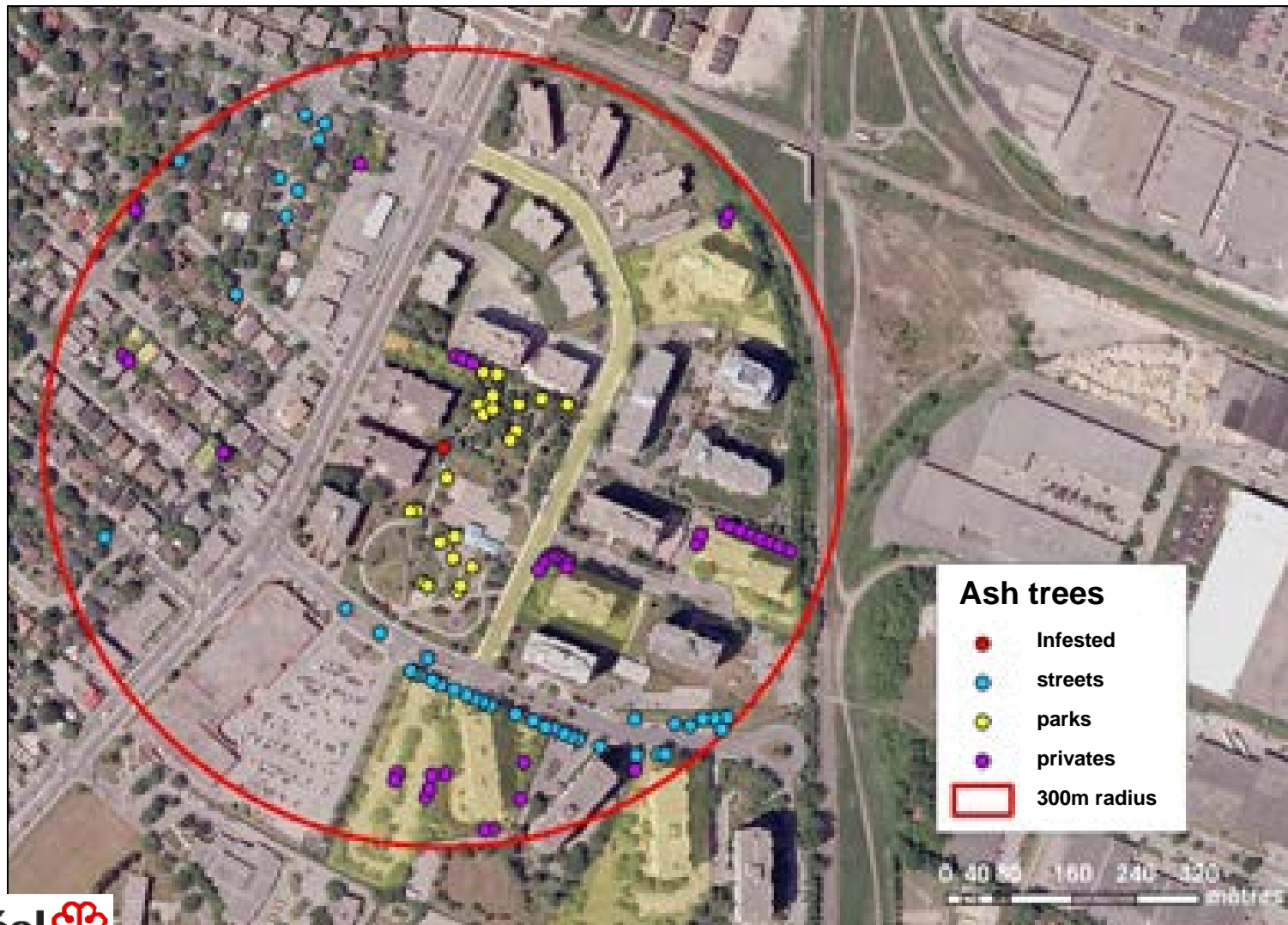
# 2016 ash tree inventory

< 72 000 street and local park ash trees

< 48 000 private ash trees

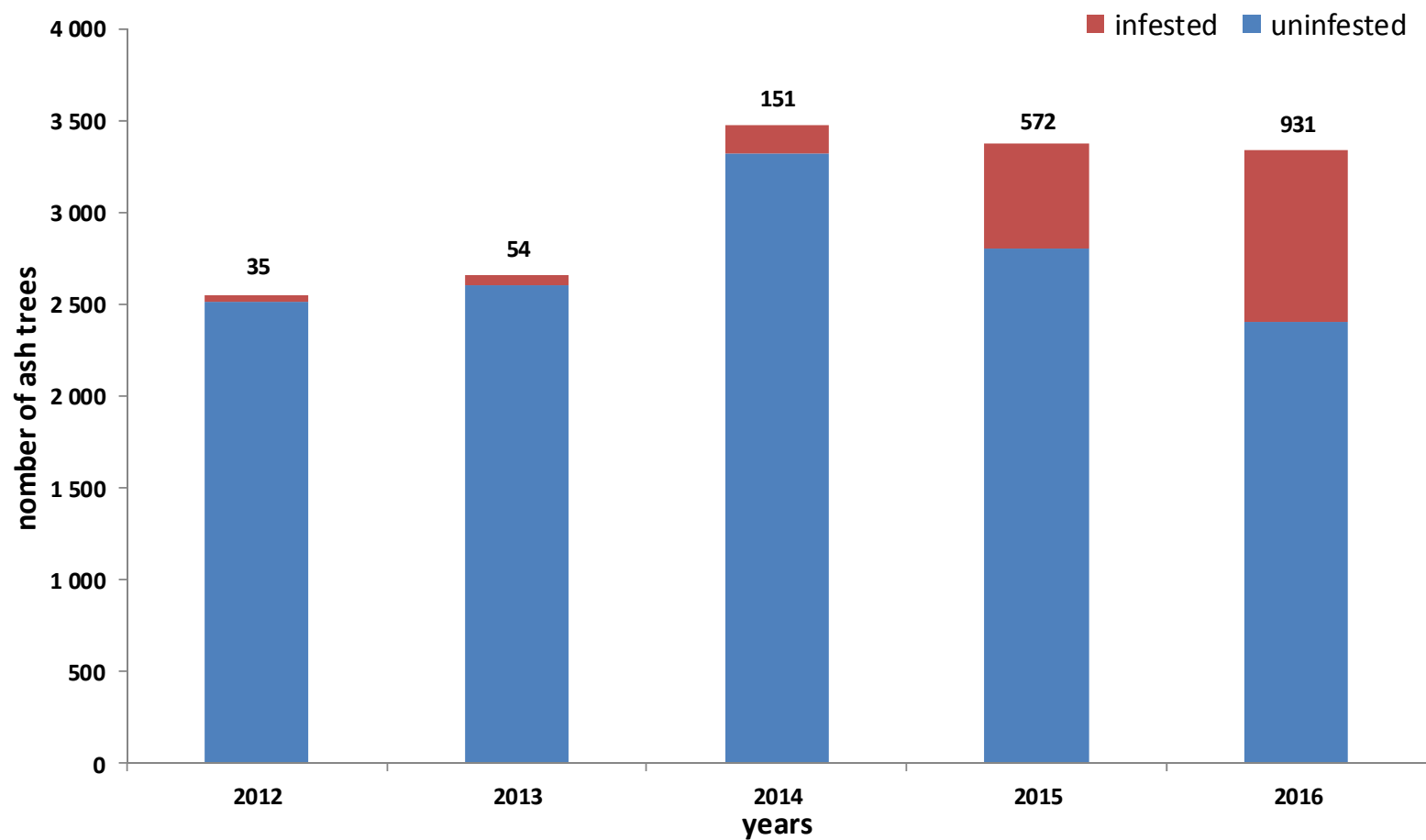


# City of Montreal Strategy





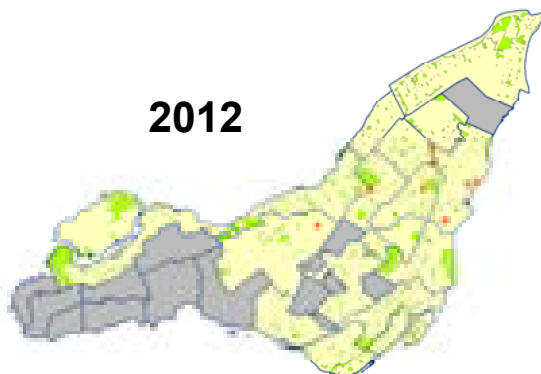
# Ash tree EAB survey



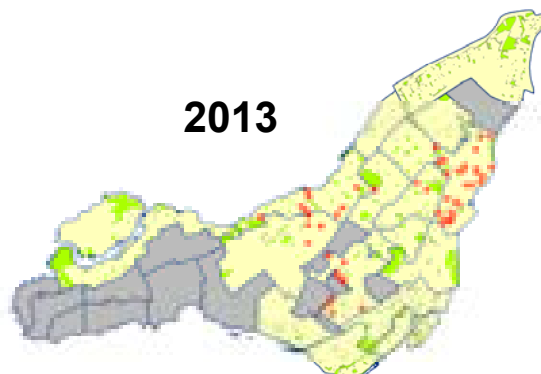
# Infested areas evolution

● EAB infestation high risk zones

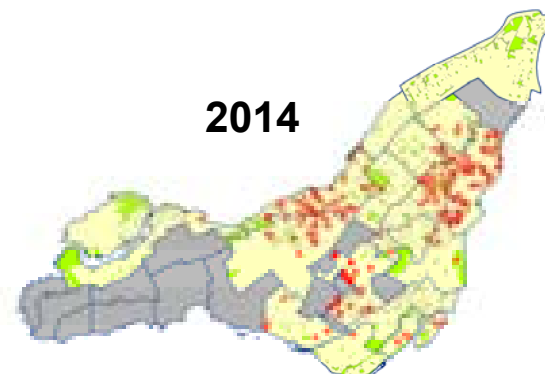
2012



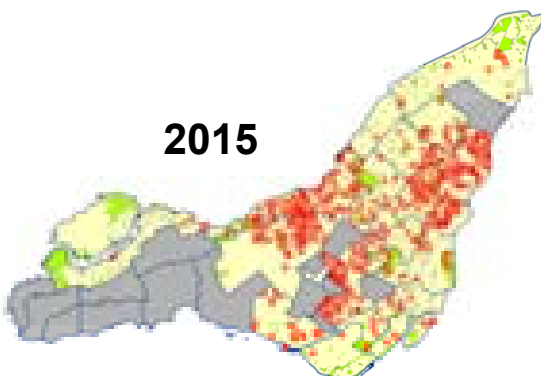
2013



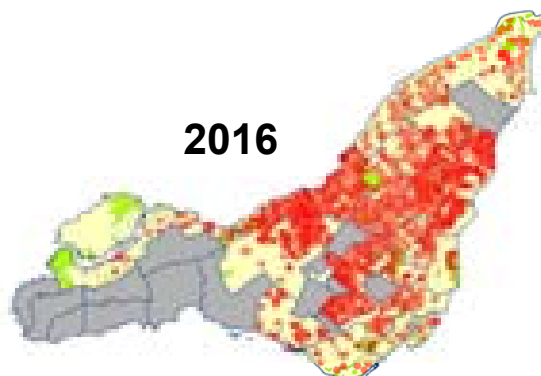
2014



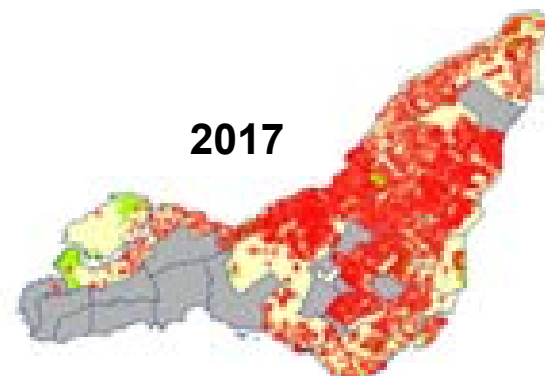
2015



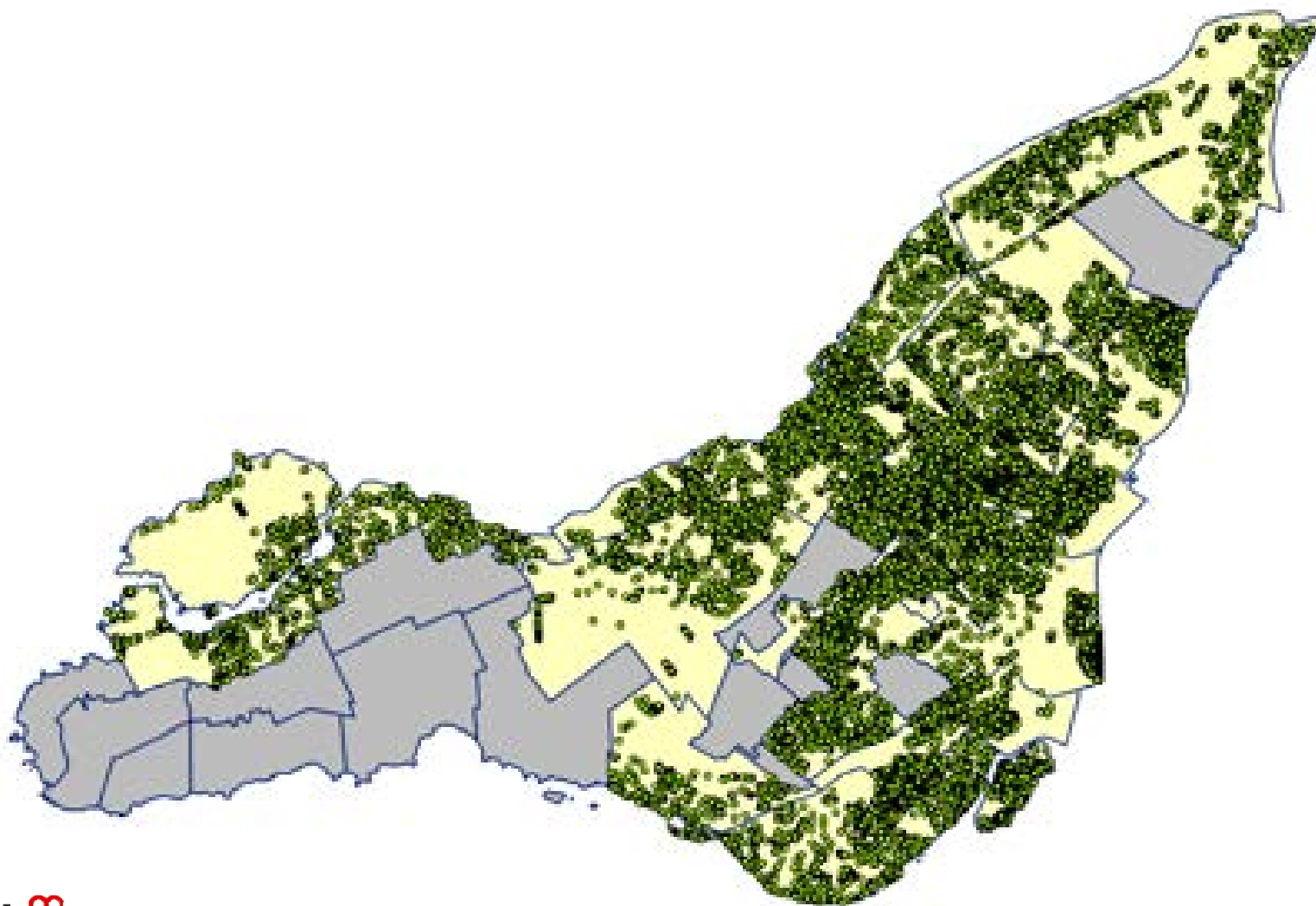
2016



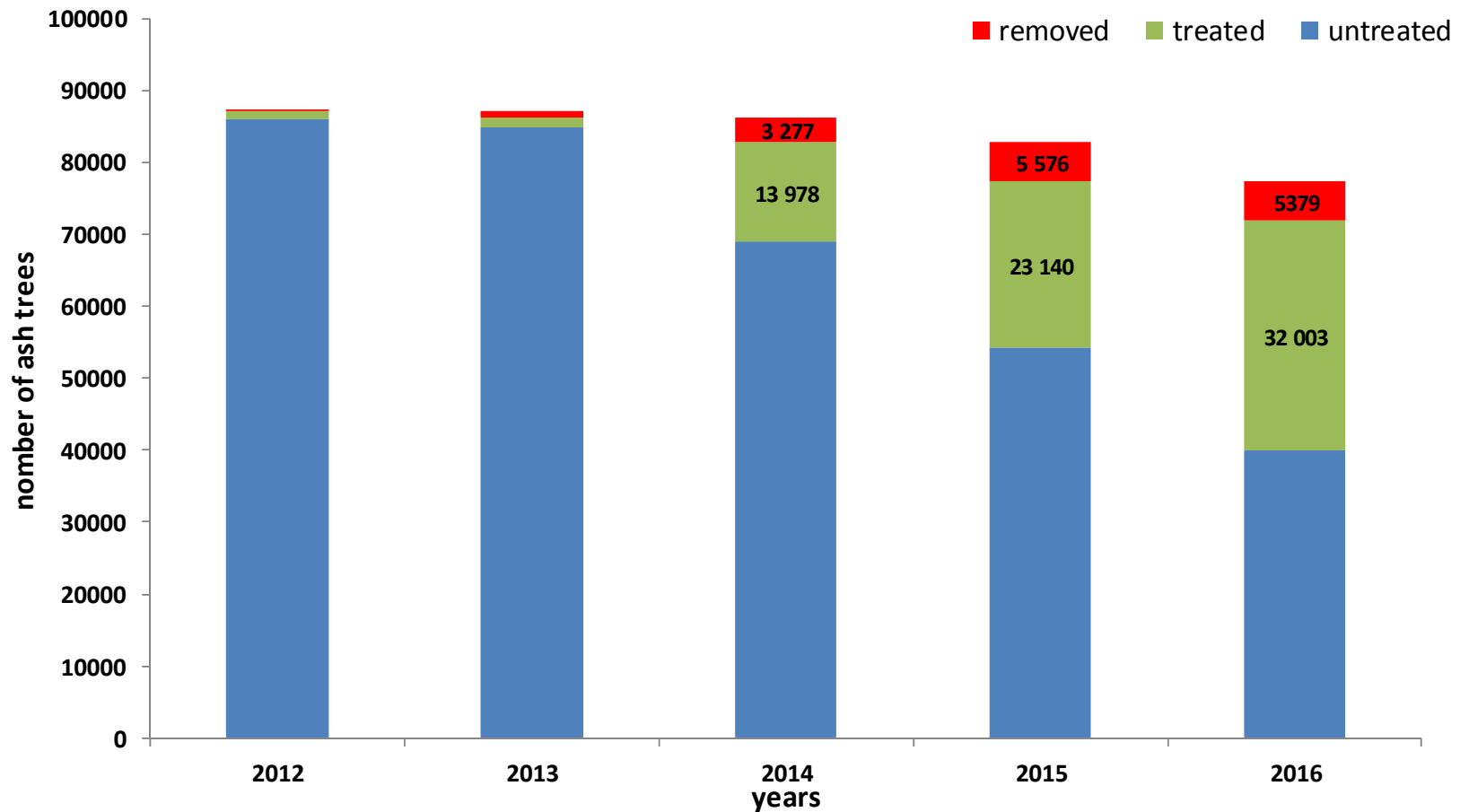
2017



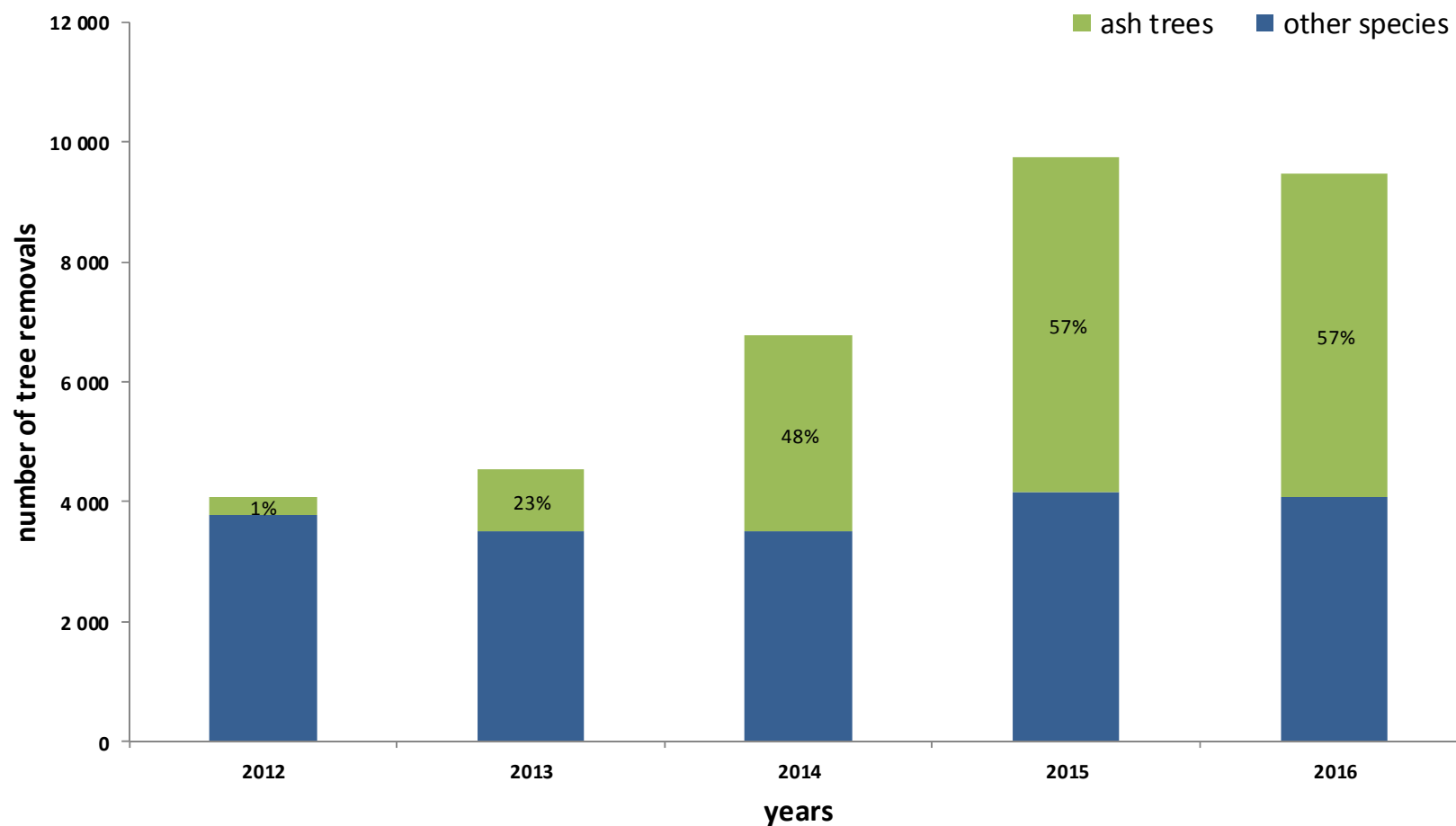
# Ash tree TreAzin treatments 2016-2017



# Ash tree treatments and removals

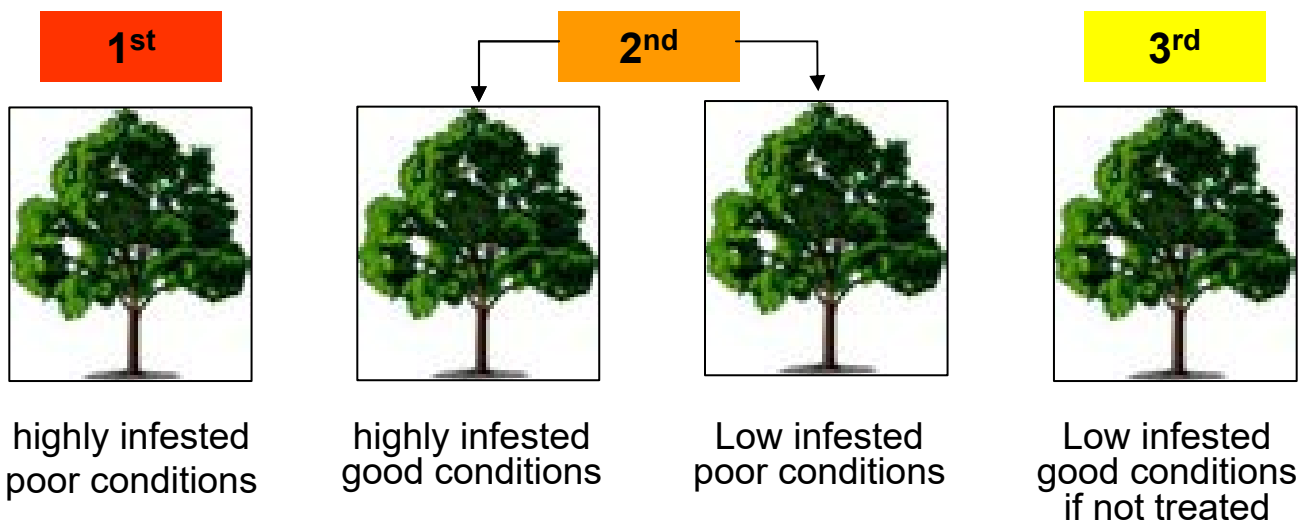


# Ash tree removals



# Strategic ash tree removals

- We removed infested ash trees in a logical sequence



- We controlled ash tree wood disposal and movement

# Bylaws and subsidy programs

- EAB management bylaw
- subsidy for ash tree treatments
- subsidy for ash tree removal and replacement



# Research partnerships

- EAB Biocontrol project with *Beauveria bassiana* fungi (NRC, INRS)
- EAB Biocontrol with parasitoid wasps (USDA, NRC)
- EAB detection with synthetic pheromone (lactone) (NRC)





# Communication efforts

- Séances publique d'information;
- Radio, Web, papers;
- Signs, posters, flyers
- Comité de concertation régional



# Main goals in 2017

- Reduce EAB impacts in Montreal woodland area
- Replace all street and park ash tree being removed
- Carry on to help private owners to treat or remove their trees
- Carry on our participation in EAB control research
- Increase ash tree's wood utilization



Thank you for your attention

